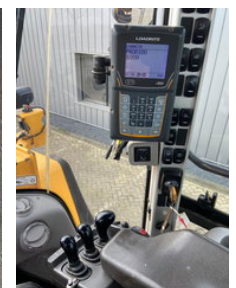
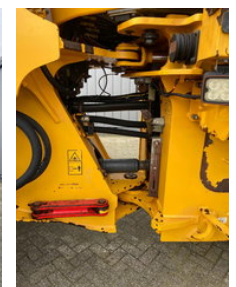
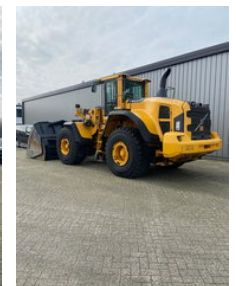


Volvo L180 G

Allgemeine Merkmale

| | |
|------------------|-----------|
| Marke | Volvo |
| Unterkategorie | Radlader |
| Baujahr | 2013 |
| Betriebsstd | 8070 |
| Farbe | Gelb |
| Zustand | Gebraucht |
| Allgemeinzustand | Sehr gut |
| Kraftstoff | Diesel |
| Emissionsklasse | stage_5 |



Eigenschaften

Leergewicht

26.500kg

Volvo L180 G

Beschreibung

From first dutch owner! dealer maintained! Volvo L 180 G * Without bucket* Year: 2013 Hours: 8070 Tyres: 26.5R25 Weight: 26.5 T Options: - Hydraulic quickcoupler - 3rd. Hydraulic circuit - BSS - CDC (comfort drive control, Joystick steering) - Central greasing - Quick coupler Volvo - Turbo II filter - Extra counterweight - Reversible fan - Weight system - Mudflaps - Work lights - Electric adjustable / heated mirrors - Rear view camera - Heated / ventilated cabin - Heated Seat - Radio FM/Aux/USB

Zubehör

- Rückwärtsfahrkamera
- Klimaanlage
- Zentralschmierung
- Radio/CD-Spieler
- Partikelfilter
- Seitentür
- Cabin
- 3rd. Hydraulic function
- CDC Joystick steering
- BSS (Boom Suspension System)
- Reversible fan
- Comfort seat
- Led Worklights