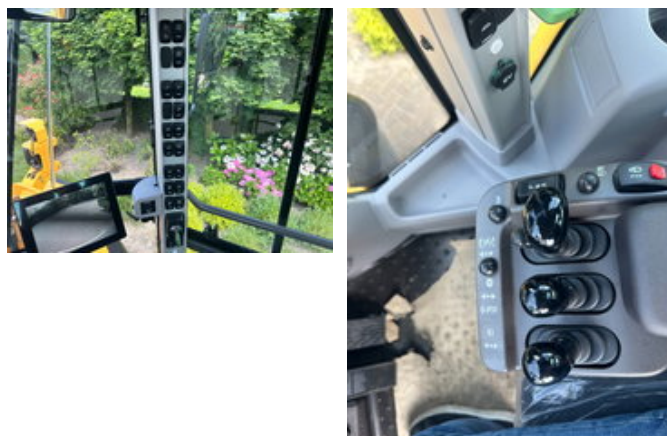
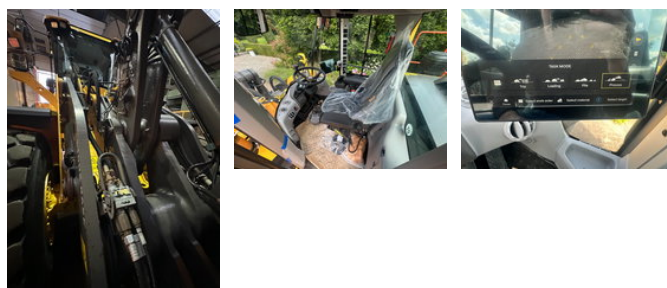
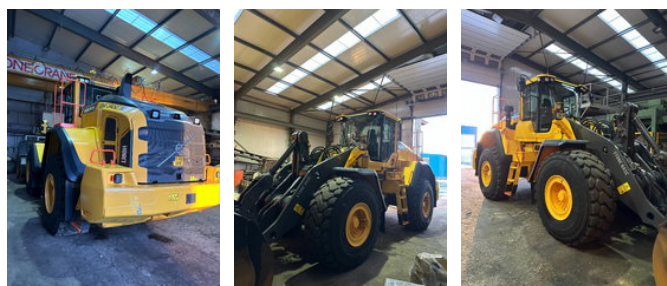




Volvo L180 H2 DEMO

Allgemeine Merkmale

Marke	Volvo
Unterkategorie	Radlader
Baujahr	2024
Datum der Erstzulassung	30-12-2025
Betriebsstd	1200
Farbe	Gelb
Zustand	Gebraucht
Allgemeinzustand	Sehr gut
Kraftstoff	Diesel
Emissionsklasse	stage_5
CE markierung	Ja



Eigenschaften

Leergewicht

28.470kg

Volvo L180 H2 DEMO

Technische Spezifikationen

Antrieb	wheels
---------	--------

Motorleistung	250kw
---------------	-------

Beschreibung

Volvo L 180 H NEW Year: 2025 Hours: 0h Tyres: Michelin 26.5R25 Stage: V Weight: 24.1 T Options: - 3rd hydraulic function - BSS - CDC comfort drive control, Joystick steering - Opti shift Lock up gearbox - Axle oil cooling front / rear - Central greasing - Quick coupler Volvo - Extra counterweight - Reversible fan - Volvo Load Assist payload system - Volvo Co-Pilot-display [reverse camera, operator annalistic, weight system and much other applications] - Mudflaps - Led package - Rear view camera - Heated / ventilated cabin - Heated Seat - Radio FM/Aux/USB With quickhitch, Or fixed bucket against more price.

Zubehör