

Volvo 120 H2

Construction	Loader
Year	2024
Mileage	0 km
Fuel	Diesel
Operating hours	1 h
Weight	20.710 kg
General state	Good
Technical state	Good
Optical state	Good

Description

Volvo L 120 H2 UNUSED

Year: 2024

Hours: 2

Tyres: 23.5-25 Michelin

Stage: V

Options:

3rd. Hydraulic circuit

4rd. Hydraulic circuit

BSS

CDC comfort drive control, Joystick steering

Opti Shift Lock Up Gear box

Central greasing Volvo

Extra counterweight

Reversible fan

Volvo Co-Pilot-display [reverse camera, operator annalistic, weight system and much other applications]

Volvo Load assist, incl task mode

Quick coupler Volvo

Axle oil cooler front + rear

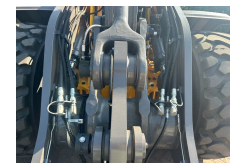
Led power package

Rear view camera

Heated / ventilated cabin

Comfort seat heated / ventilated

Radio FM/Aux/Bluetooth



Swanenberg Trading specializes in the sale of heavy earth-moving machines. If you are interested in this machine, please contact us.