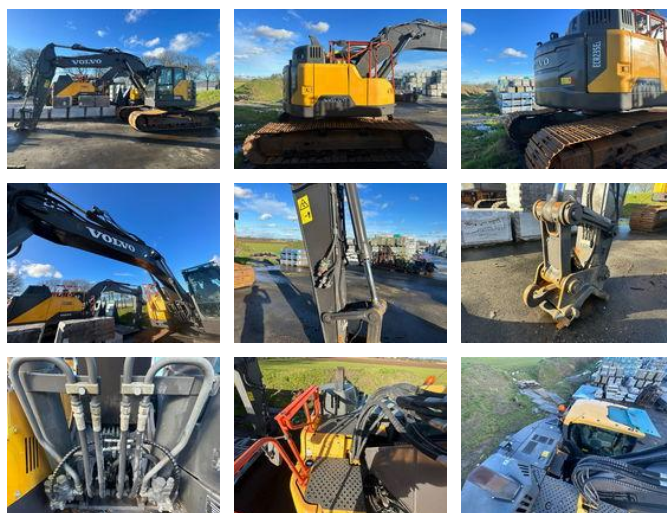


Volvo ECR 235 EL

General features

Brand	Volvo
Subcategory	Crawler excavator
Construction year	2016
Operating hours	9115
Color	Yellow
General condition	Very good
Fuel	Diesel
Emission class	stage_5



Characteristics

Empty weight 24.570kg

Volvo ECR 235 EL

Description

Volvo ECR 235 EL - Engine Stage V - 800 mm triple grouser (OTHER TRACK DIMENSIONS AVAILABLE) - Central greasing - 2900 mm Stick - Rearview Camera - Side Camera - Hose Burst Valves - LED Work Lights - X1 Hammer/Scissors Function - X3 Tiltrotator Function - Fuel Pump - Automatic Climate Control - Reversible Fan - Heated Driver's Seat - Radio MP3/USB/Bluetooth Hands-Free - Lower Windshield Wiper - Sunshades Are you looking to upgrade your equipment or in search of heavy-duty machines like this? Contact us or visit our website. <https://www.swanenbergtrading.nl>

Accessories