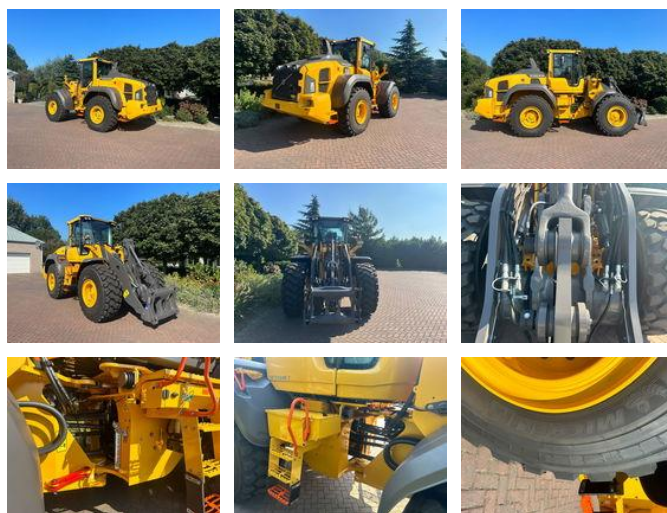


Volvo L120 H2 UNUSED

General features

Brand	Volvo
Subcategory	Wheel loader
Construction year	2025
Date of first registration	19-06-2024
Operating hours	1
Color	Yellow
General condition	Good
Fuel	Diesel
Emission class	stage_5
CE marking	Yes



Characteristics

Empty weight 20.710kg

Volvo L120 H2 UNUSED

Technical specifications

Drive

wheels

Description

Volvo L 120 H2 UNUSED Year: 2024 Hours: 2 Tyres: 23.5-25 Michelin Stage: V Options: 3rd. Hydraulic circuit 4rd. Hydraulic circuit BSS CDC comfort drive control, Joystick steering Opti Shift Lock Up Gear box Central greasing Volvo Extra counterweight Reversible fan Volvo Co-Pilot-display [reverse camera, operator annalistic, weight system and much other applications] Volvo Load assist, incl task mode Quick coupler Volvo Axle oil cooler front + rear Led power package Rear view camera Heated / ventilated cabin Comfort seat heated / ventilated Radio FM/Aux/Bluetooth Swanenberg Trading specializes in the sale of heavy earth-moving machines. If you are interested in this machine, please contact us.

Accessories