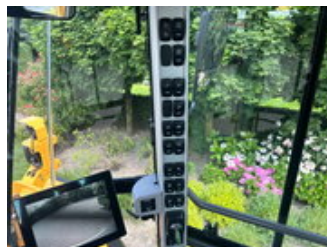
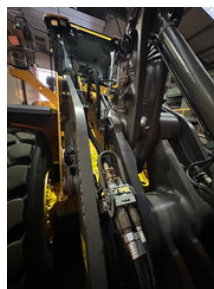




Volvo L180 H2 DEMO

General features

Brand	Volvo
Subcategory	Wheel loader
Construction year	2024
Date of first registration	30-12-2025
Operating hours	1200
Color	Yellow
Condition	Used
General condition	Very good
Fuel	Diesel
Emission class	stage_5
CE marking	Yes



Characteristics

Empty weight

28.470kg

Volvo L180 H2 DEMO

Technical specifications

Drive	wheels
-------	--------

Engine output	250kw
---------------	-------

Description

Volvo L 180 H NEW Year: 2025 Hours: 0h Tyres: Michelin 26.5R25 Stage: V Weight: 24.1 T Options: - 3rd hydraulic function - BSS - CDC comfort drive control, Joystick steering - Opti shift Lock up gearbox - Axle oil cooling front / rear - Central greasing - Quick coupler Volvo - Extra counterweight - Reversible fan - Volvo Load Assist payload system - Volvo Co-Pilot-display [reverse camera, operator annalistic, weight system and much other applications] - Mudflaps - Led package - Rear view camera - Heated / ventilated cabin - Heated Seat - Radio FM/Aux/USB With quickhitch, Or fixed bucket against more price.

Accessories